



Artistic lighting



Giving a night time identity to the city

Enlighting the city heritage, cultural or natural sites, is one of the most beautiful ways of **adding value to the city** and its **remarkable patrimony**.

However, artistic lighting must adapt to **geographical, historic, cultural** and **societal** specificities of the city in order to be in accordance with its **identity**.

You wish to:

- Add value to the architectural patrimony
- Create an event or a night show
- Create a night identity and atmosphere
- Support the high times of the city
- Reinforce the citizens' sense of belonging
- Develop tourism

Artistic lighting by Citelum:

- Analysis of the city for a coherent and attractive implantation of lights (taking into account the existing lights as well as the new ones)
- Graphic representation of the final project / report illustrated with drawings, technical schemes and 3D videos
- Proposal of different types of lighting: static, dynamic, giant screen, video projection, etc.
- Installation, operation, maintenance and monitoring of the service

Did you know?

The **LED technology** offers a palette of **16 million different colors**

Thanks to **remote processing**, the different lighting scenarios can be **real-time remotely, programmed** and **piloted**

Citelum installs «**light trails**» for citizens and tourist to help them discover the city



How does artistic lighting work?

City analysis:

- Preliminary study of the city (architecture, activity, traffic, etc.) focusing on sites and places of interest
- Consultation of city documents to ensure the coherence between the existing artistic lighting and the new one

Solution proposals:

- Citelum proposes to the city different artistic lighting scenarios and the use of various technologies:



Static lighting
Lighting without color changes



Dynamic lighting
Artistic lighting with different scenarios



Creation of 3D objects
Event and festive lighting



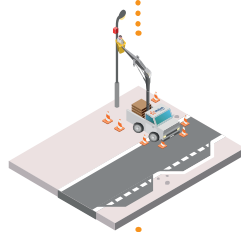
Single projector
Lighting based on a single lighting point



Projection patterns
Static projection of a lighting pattern

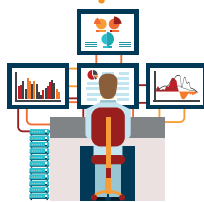


Video projection
Projection of videos on monuments



Equipment, Operation and Maintenance:

- Installation of equipment by Citelum teams
- Maintenance



Supervision and control via MUSE®:

- Real-time monitoring, control and diagnosis of all equipment and services
- Creation of different lighting scenarios
- Continuous adaptation to the city needs

- City heritage embellishment
- Stronger cultural and tourist appeal
- Increased attractiveness of the city center
- Positive business impact